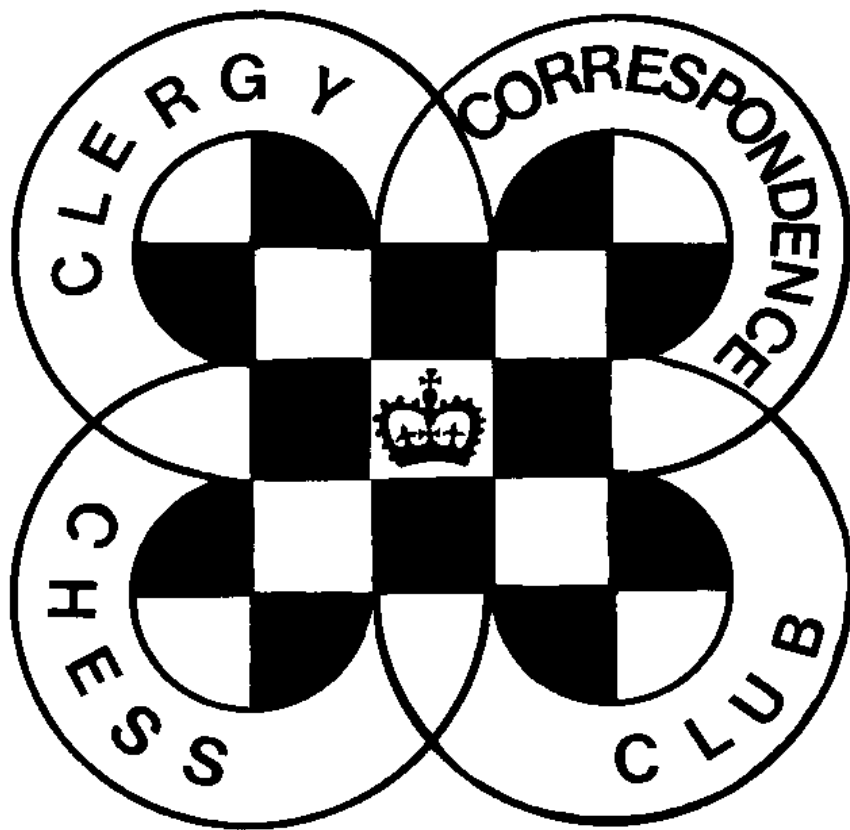
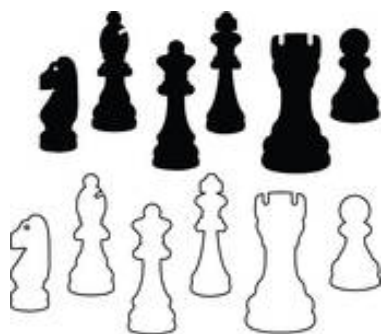


CHESS minister !

June 2025



CLERGY **C**ORRESPONDENCE **C**HESS **C**lub



CHESSE Minister!

June 2025

END OF SEASON

The current season finishes on 31st July. Please ensure that results are notified by that date. Failure to do this may result in games being scored as a loss to both players. Unfinished games can be submitted for adjudication and details of how to do this are available from the Secretary.

ENTERING FOR NEXT SEASON

If you are currently in Shield Division and have completed your games you will automatically be entered into next season's contest unless you inform the Secretary by 31st July.

If you failed to complete your games in Shield Division you must contact the Secretary by 31st July if you wish to be considered for continued inclusion in that Division.

If you are in either of the other Divisions and wish to change please tell the Secretary by 31st July which Division you would like to be considered for.

RESULTS OF THIS SEASON

Results so far received are elsewhere in this magazine. Although not all results are in yet, sufficient are to ensure that **Andrew Yates** has regained the Trophy he held two years ago, and congratulations to him. Please get any remaining results to the Secretary by 31st July.

NEWS OF MEMBERS

With sadness we record the death of our member **Paul Waterfield**. Recently a resident at one of the Methodist Homes for the Aged he died towards the end of 2024.

Our Treasurer, **Charles Mason**, has moved and his address is 57 Cranbrook Drive, MAIDENHEAD. SL6 6SA. His email remains unchanged.

Lisa Battye has moved to 860A Wilmslow Road, MANCHESTER. M20 5QP. 01924511066. 0161 826 7635. Her email is also changed to lisabattye@gmail.com

SECRETARY'S TROPHY

The results of the Secretary's trophy (Ratings prize) are in this month's magazine and congratulations are due to **Bruce Carlin** on winning this prize.

GAMES FOR THE MAGAZINE

Our thanks to those who have sent in games for publication, and to Michael Thistlewood for preparing them for the magazine. ***Please send in your games, with analysis where possible: we have virtually nothing from members in this issue.***

SCHEMING MIND STANDARD CHESS LEAGUE

We continue in Division 3 this season. After an initial heavy loss (1½- 8½) to The Chess Masters B, we lost narrowly 4½ - 5½ against knightworm 78B. With one game to finish we are level with SCCA B 4½ - 4½. Our fourth round match has not got off to a great start and we are 0-3 down to The Chess Warriors B. On the bright side I have just heard that our 5th round opponents, Team GB, cannot raise a Team so we will be awarded that match 10-0.

THE SECRETARY'S TROPHY A RATINGS PRIZE

The Secretary's Trophy, originally a prize for our residential congresses, is now awarded as a prize to the member whose Rating has most improved in the previous twelve months.

It is open to any member of CCCC registered on Scheming Mind, as that is the only way we have a Rating. Ratings are taken at the beginning of June each year and the player with the highest percentage rise in their rating (or lowest percentage fall if everyone's should fall!) wins the prize.

Any player who has not completed a game over the previous twelve months will be ineligible, to avoid someone taking the prize by their rating being unchanged if everyone else's falls.

Players joining during the year must have established a Rating by January to be eligible, so that their change is measured over at least half a year, and their initial rating will be that from the third month in which they have a rating, as any earlier rating is little more than a guess.

This year the prize is won by our Secretary, Bruce Carlin, whose rating has improved by 113% during the course of this past year, largely due to a recent win & draw against a much higher rated player in the SM Tournament.



	June 2024	June 2025	% change
Bruce Carlin	1399	1582	113
Michael Hall	1522	1622	107
David Hulme	1968	2025	103
John Druce	1124	1141	102
Michael Thistlewood *	1279	1279	100
Peter Turnbull *	1288	1288	100
David Boddy *	940	940	100
Tim Partridge *	1475	1475	100
David Nye	1554	1519	98
Andrew Yates	2042	1983	97
Jon Turner	1840	1723	94
Lisa Battye	1676	1531	91
Richard Cleaves	1527	1340	88

* Inactive during the year so not eligible.

INACTIVE PLAYERS ON SCHEMING MIND

Having marked 4 of our players in the above table as inactive over the last year, it might be worth just reminding you that if you don't play on SM then after a while you become 'Inactive.' You may still be a member but are more difficult to find and set up games. If you do want to return to active play it is probably easier to email a prospective opponent and ask them to challenge you.

To challenge an inactive player, search as normal on the Player Database but first check the box next to 'Show inactive players' at the bottom of the search criteria. This should then produce the player you require but when you try to challenge them you will get a message saying that the player has been inactive for some time and perhaps you would rather challenge someone else. Ignore this and go ahead with your challenge. This will then re-activate the inactive player who can then carry on as normal.

Chess Masters – the End Game by Richard Cleaves

Is Chess a Game or a Sport? Not being entirely certain of the latest thinking I asked Google. The response suggested that any controversy has now been resolved: ‘The International Chess Federation serves as the governing body of the sport of chess, and it regulates all international chess competitions. Google, my trusty friend, took me to Chess.com for confirmation: ‘Yes **Chess is a sport** alongside being a fun board game, strategy game, competition, and a form of art. Chess should be viewed as a sport.’

The BBC website helpfully categorises its programmes in two ways, according to **Genre** and **Format** (<https://www.bbc.co.uk/programmes>). Click on **Genre** and scan down to **Sport** and no fewer than 67 are listed. But not Chess. Click on **Format** and scan down to **Games and Quizzes** and no fewer than 81 programmes are available now. But not Chess.

It would seem that the BBC in its wisdom has decided that Chess is neither a Sport nor a Game. Where then might their first Chess programme in forty years be found? A search through **Genres** won't get you very far, but click on **Format** and it's hiding in the very last of the categories available, **Talent Shows!** Eighteen are listed and there you'll find it: **Chess Masters: the End Game** heads a list that includes *Strictly Come Dancing*, the *Junior Eurovision Song Contest*, and *Show me the Honey*.

Herein lies the problem with the BBC's latest chess offering. As a talent show, it's quite fun. Sue Perkins moves effortlessly from *The Great British Bake-off* via *Just a Minute* to top and tail the show as the celebrity presenter. Anthony Mathurin moves from *Traitors* to be the Chess Coach, though in episode one there isn't much coaching for him to do; and one time British Chess Champion David Howells provides expert commentary. The first six of the twelve contestants are personable enough but seem to have been picked more for their talent-show personas than their chess ability. Those with most self-confidence and least skill seemed to have been set up to fail embarrassingly. I guess nicknames like ‘The Swashbuckler’ and ‘The Killer Queen’ were borrowed from *Gladiators*, though, come to think of it, that's a Game Show and not a Talent Show!

The half-hour programme was full of chatty contributions from the contestants while we watched three 15 minute games being played simultaneously. We then watched the three losers attempt a fun puzzle in which a Bishop had to take each of the eight pawns. A good exercise to share with my grandchildren, had they clearly shown us the original setup. A final eliminator game led to the departure of one of the contestants. Cameras tried to show us the moves on the board in a way that is inevitably difficult to follow. We watched David Howells standing by a display board as he did his best to introduce some basic chess theory. On iPlayer the eliminator game was shown in full in the kind of format we now take for granted in online coverage of chess: the moves on a diagrammatic board with views of the players and the commentators to the right. Sadly, as the game to decide who would leave it was one of the poorest games and hardly worth a fifteen minute programme of its own.

The last time Chess was on TV it was covered as a Sport. That other great source of reliable information, Wikipedia, tells me that Raymond Keene commented on the world championships of 1981, 1986, 1990, 1993 and 1995 for BBC2, Channel 4, and Thames TV. It was Channel 4's coverage of the 1993 championship between Nigel Short and Gary Kasparov that caught my imagination. I bought the Times for the series of supplements; tracked through each game on a pocket chess set; and each night followed the highlights of the game with Keene's expert commentary. It inspired me to help out with the school chess club and prompted me a couple of years later to join the Clergy Correspondence Chess Club.

I've continued to follow TV coverage of the world championships, albeit online, most recently with the help of David Howells and IM Jovanka Houska on YouTube. As I used to do with Test Match Cricket when it was on terrestrial TV, I kept the TV on and dipped in and out as the five hour game unfolded. I commented to my wife how brilliant the commentators were. Just like Test Match Special, when commentators keep a rapt audience tuned in for hours even when rain has stopped play, so too David Howells and Jovanka Houska kept going as one or other of the players thought for half an hour over one move. It was brilliant coverage, not least as Game 14 came to a dramatic end. If you haven't seen it already look for David Howells' Commentary with Jovanka Houska on https://www.youtube.com/watch?v=ec_SkIkHs1Y and pick it up at 4 hours 19 minutes as Gukesh Dommaraju faces off Ding Liren! You'll see just how good a commentator Howells can be!

Come on, BBC, you can do better than this. Give us a taste of a real Chess Championship with top players and let David Howells and someone of the stature of Jovanka Houska introduce a new audience to the thrill of chess at its best.

P.S. The BBC redeemed themselves a little by repeating the 2009 programme *How to Win at Chess* on BBC4 after the second episode of *Chess Masters*. Daniel King and Raymond Keene play through a game that illustrates the Opening, the Middle Game and the End Game with lively contributions from British Junior Chess Champion, Sheila Dines, a teenage David Howells, Intermediate Master Harriet Hunt and many more. Archive footage gives us a glimpse of earlier chess coverage. CCCC members will be pleased to see the virtues of correspondence chess extolled alongside the excitement of blitz chess and even Chess Boxing! I took to heart the comments of a member of the Popular Postal Chess Club, ‘In order to excel at Chess later on, you've got to be prepared to lose and lose and lose.’ Catch up with it on iPlayer or on YouTube, <https://youtu.be/7-uBVNibVXU?si=0NgF-7fDjcoR-H1Z>.

CLERGY CORRESPONDENCE CHESS CLUB

SHIELD DIVISION RESULTS 2024 / 2025

	Y		N		C		H		D		T		B		Tot	%
Yates			1	1*	1	1*	1*	1	1	1*	1*	1	1	1*	12/12	100
Nye	0	0			1	1*	0	1			0	0			3/7	43
Cleaves	0	0	0	0			0	0	1	0	0		0	0	1/11	9
Hall	0	0	1	0	1*	1			1	1*	1*	0	0	1*	7	58
Druce	0	0			0	1	0	0							1/6	17
Turner	0	0	1	1*	1		0	1*							4/7	57
Battye	0	0			1	1*	1*	0							3/6	50

* indicates a game won or drawn with the Black pieces

CONGRATULATIONS TO ANDREW YATES 2024/2025 CHAMPION

Andrew Yates has reclaimed the Ivor Davies Trophy in emphatic fashion with 100% score.

Apart from Andrew, only Michael Hall has completed his games at this stage on 58%.

Please make sure I have the remaining results by 31st July.

RESULTS FROM SOCIAL OR OCCASIONAL DIVISION

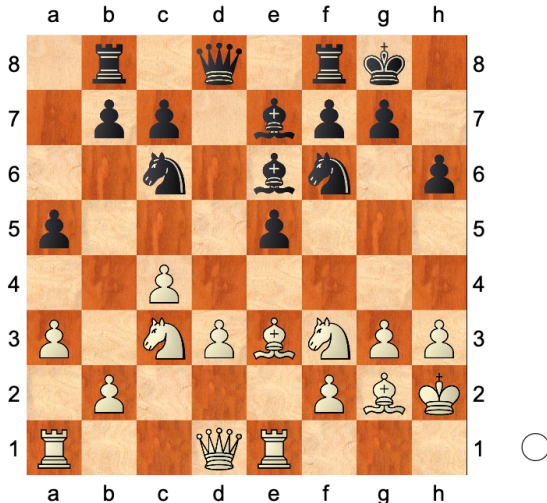
Although there is no format table for the other Divisions I will record results of games here if I am informed of them.

Social Division
Williamson 1- 0 Carlin
Carlin 1-0 Williamson

□ Ding Liren
 ■ Gukesh D.
 World Championship

22.02.2025

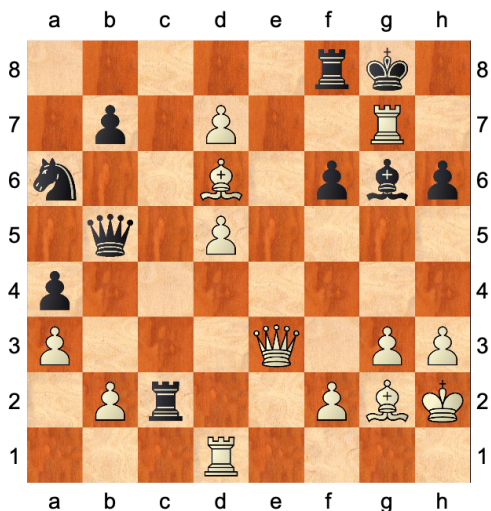
1.c4 e6 2.g3 d5 3.Bg2 Nf6 4.Nf3 d4
 5.O-O Nc6 6.e3 Be7 7.d3 dxe3
 8.Bxe3 e5 9.Nc3 O-O 10.Re1 h6
 11.a3 a5 12.h3 Be6 13.Kh2 Rb8
 Diagram



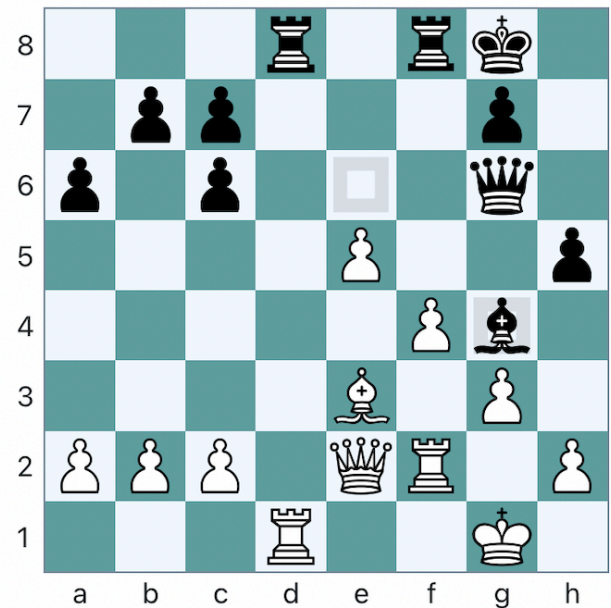
14.Qc2 Re8 15.Nb5 Bf5 16.Rad1
 Nd7 17.Qd2 Bg6 18.d4 e4 19.Ng1
 Nb6 20.Qc3 Bf6 21.Qc2 a4 22.Ne2
 Bg5 23.Nf4 Bxf4 24.Bxf4 Rc8
 25.Qc3 Nb8 26.d5 Qd7 27.d6 c5
 28.Nc7 Rf8 29.Bxe4 Nc6 30.Bg2
 Rcd8 31.Nd5 Nxd5 32.cxd5 Nb8
 33.Qxc5 Rc8 34.Qd4 Na6 35.Re7
 Qb5 36.d7 Rc4 37.Qe3 Rc2 38.Bd6
 f6 39.Rxg7+ Diagram

(Diagram)

1-0



Was there an alternative?



This was the final position in a recent game in the Scheming Mind Chess League.

I am White and my opponent had moved Bg4 already, which looked pretty horrible as my Queen was pinned against my Rook. After some thought I realised that Qc4+ got me out of this threat. But he responded with Be6, threatening my Queen, and the only move I could see was to go back Qe2, since without the Queen there my Rook is under threat from his on d8.

He again moved Bg4 which raised the possibility of a draw by repetition if he did it again, and I did comment to him that I couldn't see an alternative, so if he did repeat the move that would be the outcome, and that is what duly happened.

I was well outranked by my opponent so a draw didn't seem too bad a result, but I really couldn't see that I had any alternative without losing a major piece.

Did I overlook something?

Bruce Carlin

A09

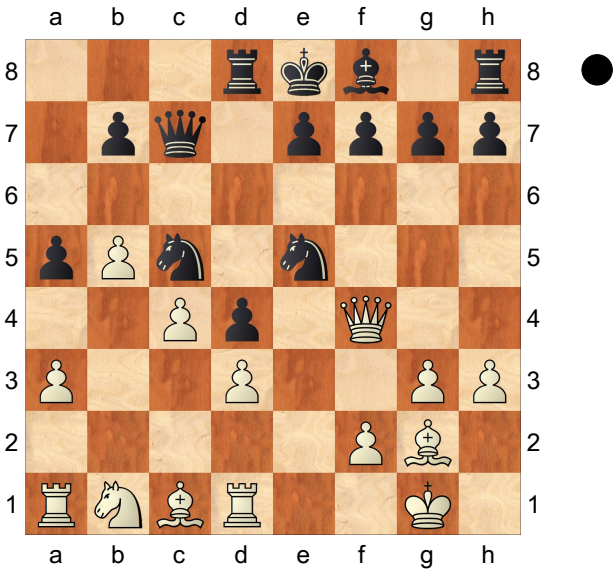
Gukesh D,

Ding Liren

World Championship

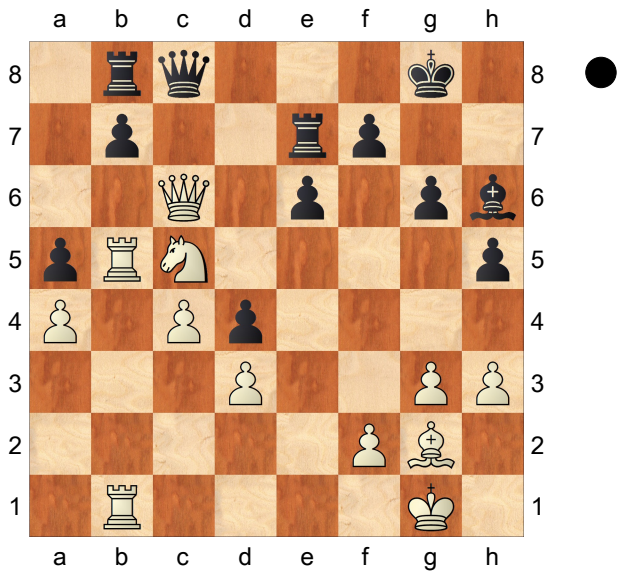
2024

1.Nf3 d5 2.c4 d4 3.b4 c5 4.e3 Nf6
5.a3 Bg4 6.exd4 cxd4 7.h3 Bxf3
8.Qxf3 Qc7 9.d3 a5 10.b5 Nbd7
11.g3 Nc5 12.Bg2 Nfd7 13.0-0 Ne5
14.Qf4 Rd8 15.Rd1 Diagram



g6 16.a4 h5 17.b6 Qd6 18.Ba3 Bh6
19.Bxc5 Qxc5 20.Qe4 Nc6 21.Na3
Rd7 22.Nc2 Qxb6 23.Rab1 Qc7
24.Rb5 0-0 25.Na1 Rb8 26.Nb3 e6
27.Nc5 Re7 28.Rdb1 Qc8 29.Qxc6
Diagram

(Diagram)





CLERGY CORRESPONDENCE CHESS CLUB


Affiliated to the English Federation for Correspondence Chess
and the Welsh Correspondence Chess Federation

www.efcchess.org.uk/cccc



President : The Revd. Canon Tim Partridge, 
St Crispin Retirement Village,
NORTHAMPTON. NN5 4RA Email: esther.partridge@tiscali.co.uk

Treasurer : The Revd. Charles Mason,  07745 973450
57 Cranbrook Drive
MAIDENHEAD. SL6 6SA Email: revdcom@btinternet.com

Secretary: The Revd. Bruce Carlin  01924 511066
44 Frank Lane,
DEWSBURY. WF12 0JJ. Email: bc7275@icloud.com

Life Members

Wilf Alexander	Ruggles Fisher	David Nye	Michael Williamson
Lisa Battye	Jeremy Garton	Tim Partridge	Andrew Yates
David Boddy	Michael Hall	Brian Stevenson	
David Brown	David Hulme	Michael Thistlewood	
Bruce Carlin	Matthew Joy	Peter Turnbull	
Richard Cleaves	Charles Mason	Steve Whitmore	

Subscriptions

Life membership £ 80.00
Annual membership £ 6.50

Our current Membership Year is from October 2024 to September 2025

Payments can be made to CCCC by BACS Account Name: Clergy Correspondence Chess Club
Bank: Santander plc Sort Code: 09-01-56 Account No: 12314006

If you make payments by this method, please use your name as a reference so that our Treasurer can identify the payment, and email him to let him know it's coming and what it's for (eg subs, Scheming Mind, book purchase, etc). Alternatively you could include the purpose of the payment in the reference.

The Secretary holds members' name, address, phone number, and email addresses where provided, their CCCC division, and membership of any team, and the Treasurer holds members' subscription records.